



PROVINCIAL DEPARTMENT OF EDUCATION-SABARAGAMUWA

Western Music

2nd Week July

Grade 10

Prepared by- G.D.A.M. Pushpa Kumara
[Music Teacher]:- Royal College-Ruwanwella]

Competency- Ability to apply theoretical and practical knowledge of the Rudiments of music.

Competency level - introduction to four-part harmony

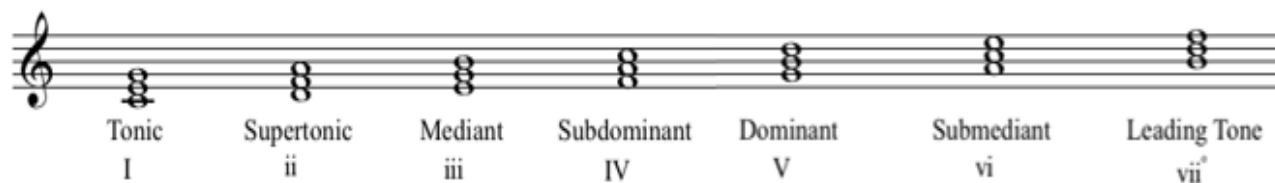
MOST CHORD OR INSTRUMENTAL PIECES ARE BUILT WITH A COMBINATION OF FOUR [4] DIFFERENT VOICES.THEY ARE...

1.SOPRANO. 2.ALTO. 3.TENOR. 4.BASS.

Chords

Change a triad to four-part harmony

- a triad is the simplest type of chord built on a note.
- It can be built on each degree of a major and minor scale.



A **Chord** could be described as three or more notes sounded together

Music written for four part choir or insrtumental pieces often use chords that contain the three notes of the triad and an extra root note, making a total of four parts.

Which note should be doubled....?

Exercise : ☐ ?? ☐ ??

C	F	B ^b	E ^b	D	A
Root	Root	Root	Root	B	F [#]
G	C	F	B ^b	G	D
E	A	D	G	B	F [#]
C	F	B ^b	E ^b	G	D
Root	Root	Root	Root		

Let us listen to the musical extract from the last line of the song “Good King Wenceslas.”



- Listen to the triad in the right hand.
- Listen to the chords played with both hands.

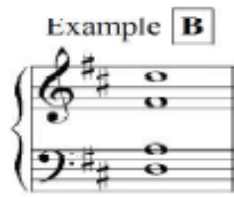
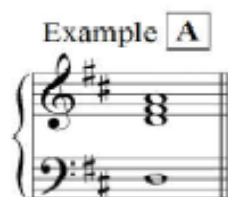
After listening to the right hand and both hands separately you will understand the difference between a Triad and a Chord.

A chord could be arranged in several ways.

A - With three notes in the Treble and one in the Bass.

B - In four parts with the Soprano and Alto voices in the Treble clef and the Tenor and Bass in the Bass clef.

Examples :



The Primary Chords

The three major chords, I, IV and V are the most important chords in any key. They are called Primary Chords. The Primary Chords are the best chords to harmonize any note in the scale.

How to write – three notes in the Treble and one in the Bass

The best note to be placed in the Bass is the root of the chord. The three notes in the Treble may be in root position, 1st inversion or 2nd inversion.

Let us see one example..... the Dominant chord of E major in four parts with the 3rd at the top. (Three notes in the Treble and one in the Bass.)

Example 2



- i. The four notes of the chord are B, D#, F# and B.
- ii. The root will be in the Bass part.
- iii. The 3rd note of the chord will be in the top-most part of the Treble clef.
- iv. B and F# come immediately below the top note.

1. Write the chord indications with roman numerals and name the note at the top of each chord



Chord Indication _____

Note at the top _____

2. Write the following chords with three notes in the Treble and one in the Bass.

- i Sub-dominant chord of F major with the 3rd at the top.
- ii Dominant chord of C minor with the Dominant at the top.
- iii Tonic chord of E major with the root at the top.

