



Provincial Department Of Education – Sabaragamuwa
WEEKLY SCHOOL

Subject : Science

Grade 7

Week : 15th of 2nd Term

Unit 12 – Biological Processes(1)

✓ **Organisational levels of life**

- The living body contains large number of small building units. This basic building unit is called as the **cell**. Cell is the structural unit of living organisms.
 - Structural unit of plant is referred to as and structural unit of animal is referred to as



- **Cell**

The Cell is

.....

.....

.....

- **Tissue**

A Tissue is a

.....

.....

Features of Tissues

- 1
- 2

- **Organ**

.....

.....

.....

- **System**

.....

.....

.....

- There are two main systems in the plant body. They are;

1.
2.

- **Organism**

.....

.....

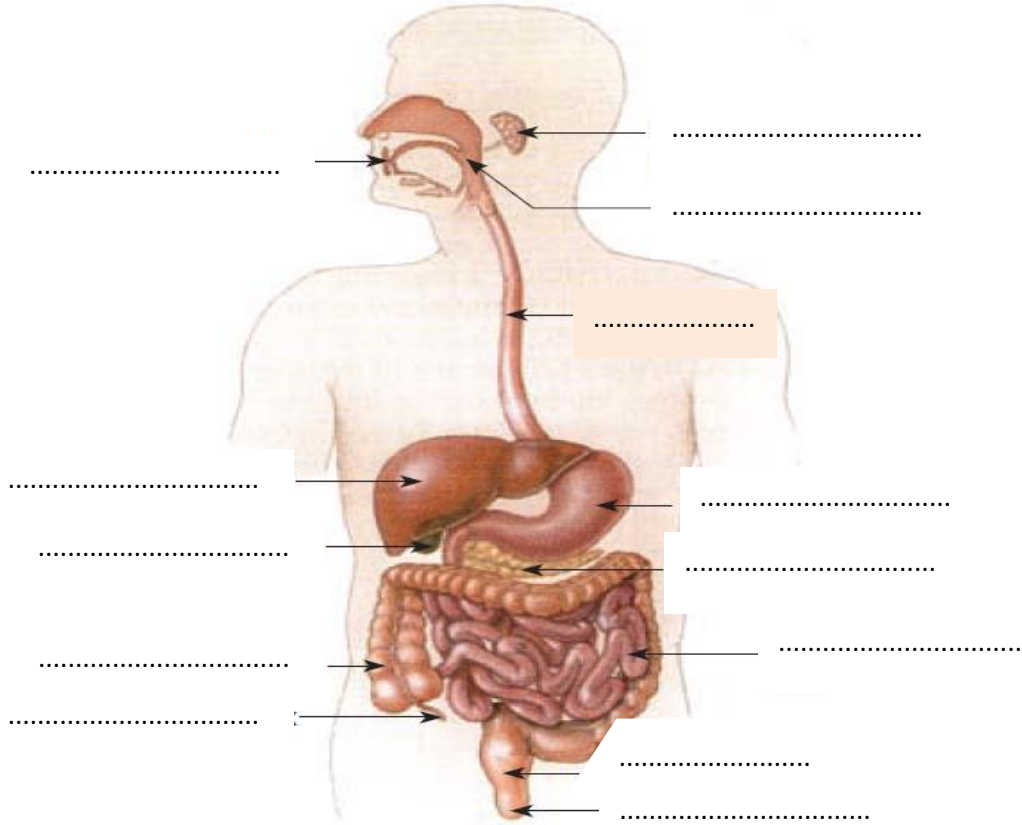
➤ **Systems of the human body**

○ **Digestive system of man**

main functions of the human digestive system are

- 1
- 2

○ Name the main parts of the human digestive system by using the given figure.

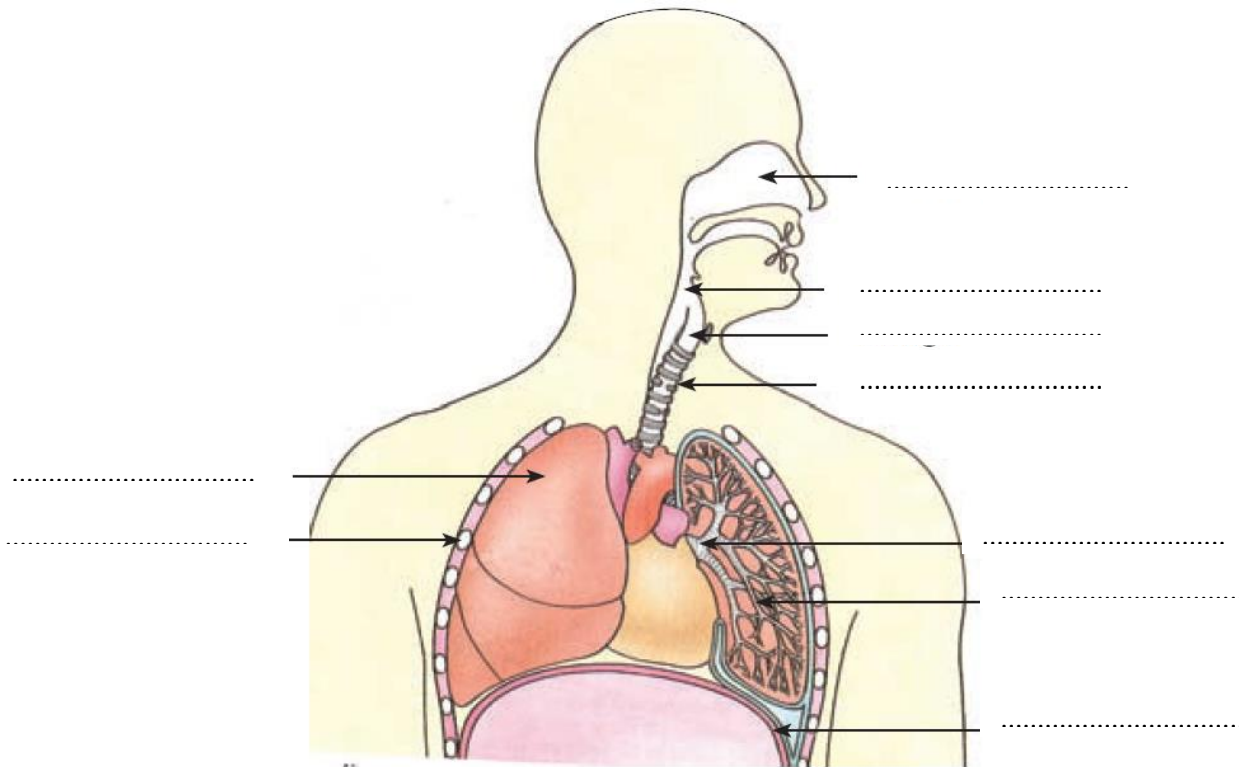


○ Complete the following table.

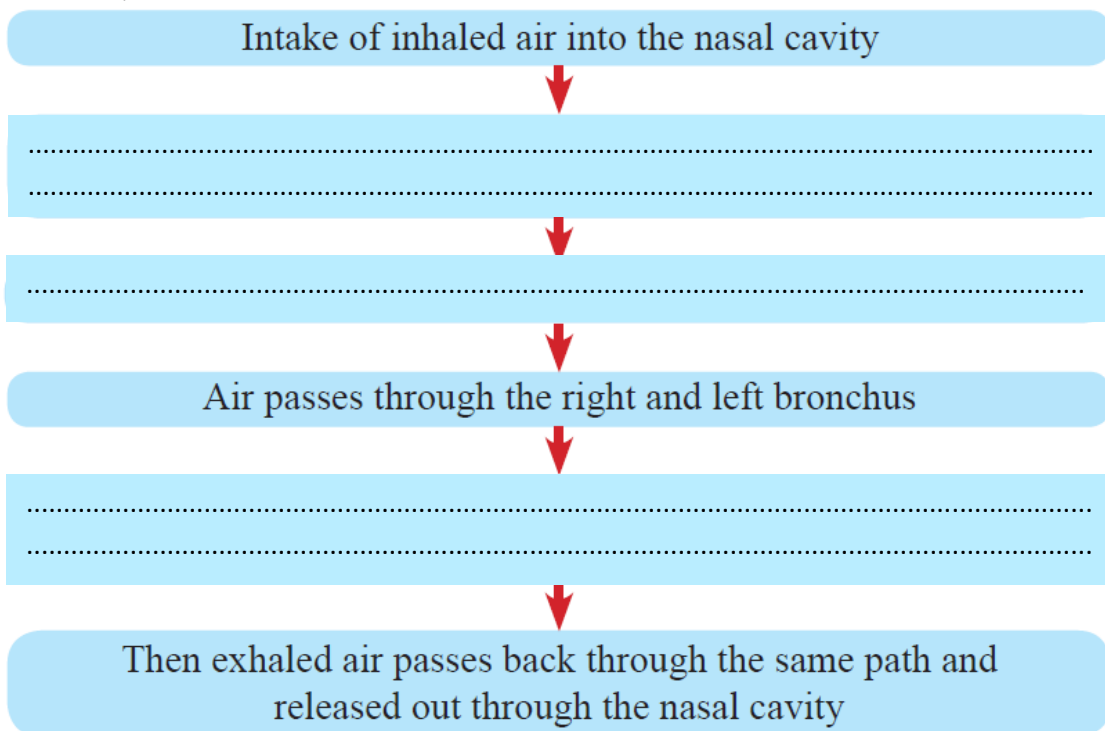
Organ	Structural features & functions
Mouth cavity
Pharynx
Oesophagus
Stomach
Small intestine
Large intestine
Anus

➤ **Human Respiratory system**

- The process where energy is produced by reacting or burning of simple foods with oxygen is called
- The intake of air needed for respiration is called
- The intake of air needed for respiration is called
- Name the main parts of the human Respiratory system by using the given figure.



- The following incomplete flow chart explains the activities of human respiratory system. Complete it correctly.



Activity 12.11

Make a suitable model to demonstrate the human respiratory system. Present it to the class.