



Provincial Department Of Education – Sabaragamuwa
WEEKLY SCHOOL

Subject : Science

Grade 7

Week : 02nd of 1st Term

Unit 1 – Plant Diversity(2)

- Main parts of a flowering plant



Assignment 1.2

Identification of main parts of a flowering plant

- Select a small plant that produces flowers and fruits.
e.g.:- ‘Monara Kudumbiya’, / ‘Seethaviyar Selugkaluner’
‘Kuppameniya’ / ‘Kuppaimani’
- Add some water to the root and uproot it from the soil carefully without breaking roots.
- Remove soil around roots carefully
- Press it between pages of newspapers, by adding a weight. Let it dry.
- Prepare a field book and paste the specimens in it after about one week.



Activity 1.2

The Figure 1.3 shows the parts of a flowering plant. The main parts are labelled from 1 to 11.

- | | |
|----------------------------------|------------------|
| 01. Tap root | 08. Branches |
| 02. Lateral roots | 09. Fruits |
| 03. Root system | 10. Flowers |
| 04. Stem | 11. Shoot system |
| 05. Lateral buds (Axillary buds) | |
| 06. Leaves | |
| 07. Apical bud | |

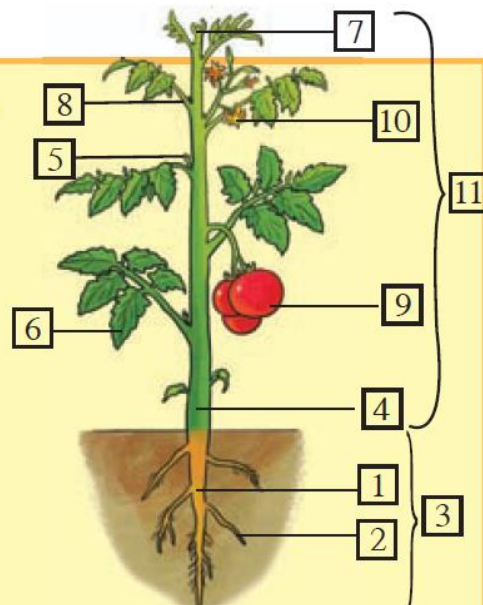


Figure 1.3 ▲ Parts of a flowering plant

- Identify the main parts of a plant in Assignment 1.2 referring to Figure 1.3.