

**Subject - Information & Communication Technology**

**Grade 10**

**Month – October**

**Week - 2**

**Competency 7: Uses Spreadsheet to solve simple statistical problems.**





**Competency Level 7.7: Creates Charts using spreadsheet to explain data.**

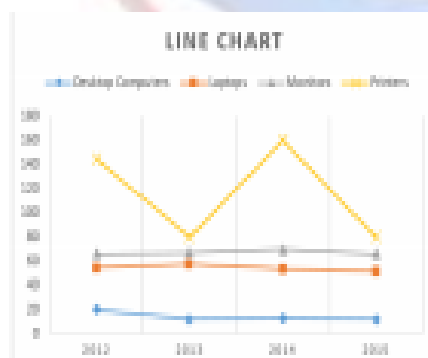
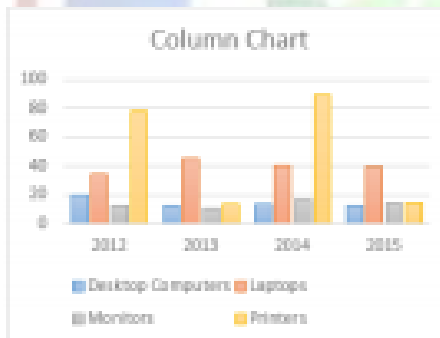
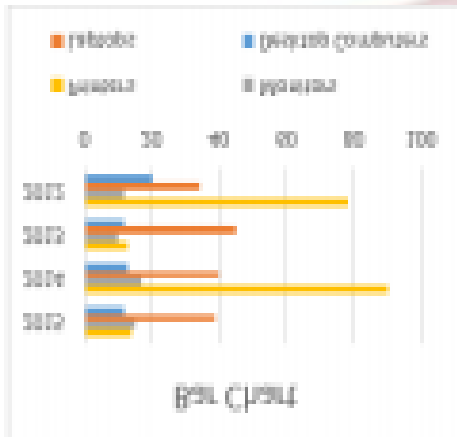
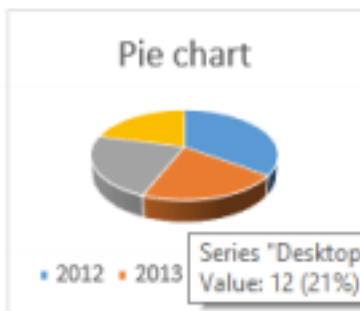
**Student Work**

01. A column graph should be created for the following data. Write down the relevant steps.

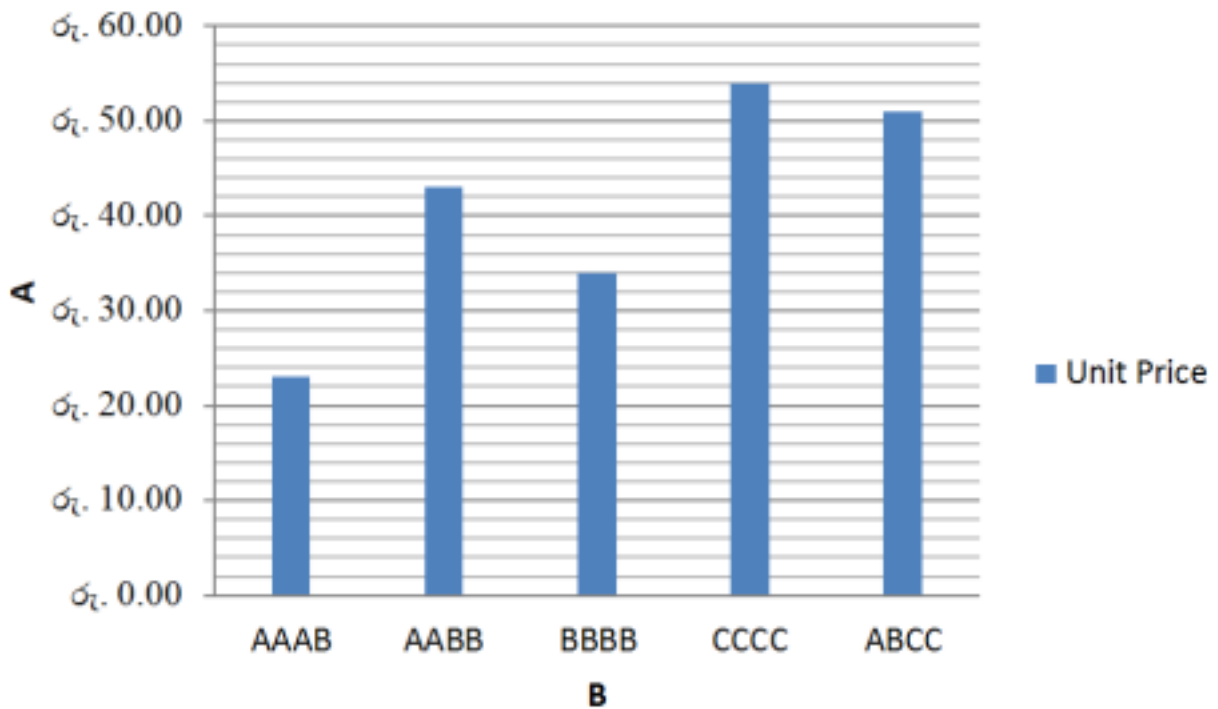
Item	2012	2013	2014	2015
Desktop Computers	20	12	13	12
Laptops	34	45	40	39
Monitors	12	10	17	15
Printers	78	13	90	14

02. Below are some charts created from the above data.. Indicate the letter corresponding to the tool used to obtain the chart in front of the relevant type 1 sheet type.

			
A	B	C	D



03. Write down the steps required to obtain the following graph and E sections.



- Read and understand 233, 234, and 235 in your reading book.
- Take and learn lesson-related lessons from the online or printed learning aids listed here.
- If you have a computer, do activities 233, 234, and 235 in the reading book.

Learning aids that can help with this lesson.

- Guru gedara - <https://www.youtube.com/GUNOFJ-YrX4>
- e-nenapiyasa - <https://www.enenapiyasa.lk>

### Learning Outcomes Available through this Lesson

- Identifies the relevant chart type.
- Present data using suitable built in chart types.