



3rd Term - Revision Exercises

1) Complete the following table using inherited characteristics in human population.

Common inherited characteristics	Rare inherited characteristics

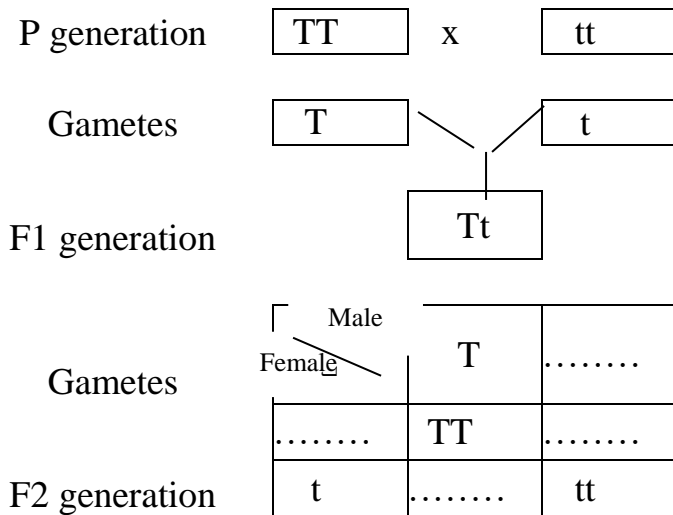
(Dimpled cheeks , Syndactyly ,Albinism, Skin color ,Fused or free earlobes, Ability to fold the tongue , Position of the thumb when the fingers are crossed , Polydactyly, Widow's peak , Curly hair, Brown or blue eyes, Straight and curved thumb)

2) Fill in the blanks using the words given below.

Gregory Mendel used the 1..... plant for his experiments. He said there are 2..... Factors for single character. Then he identified them as 3..... One of them is called 4..... and the other one is called 5..... The dominant feature is denoted by a English 6..... letter and the the recessive feature is denoted by a 7..... letter. If the two factors are similar for a given feature of an organism, it is said that this organism is 8..... for that feature. If the two factors are different, then that organism is 9..... for that feature. Mendel concerned only one factor at a time, for the inheritance of a certain characteristic. Therefore it is called as 10.....

(homozygous,garden pea, genes, two, Monohybrid cross, recessive factor, heterozygous, capital, dominant factor, simple)

3) Complete the following punnett square. It is a monohybrid cross between a tall plant & a short plant of green pea.



4) Match with the correct one.

1. The gene pair for a particular characteristic.	Phenotype
2. The genetic material that transmits features of organisms from generation to generation.	Linked genes
3. The gene composition which decides the external appearance.	Deoxy ribo Nucleic Acid
4. The feature that an organism exhibits externally.	Morgan
5. Genes that present in the same chromosome which are not segregated independently.	Genotype
6. Structure of DNA was first discovered by	Genes
7. Gene linkage was found by	Gene expression
8. The specific base sequence of a DNA molecule.	Watson & Crick