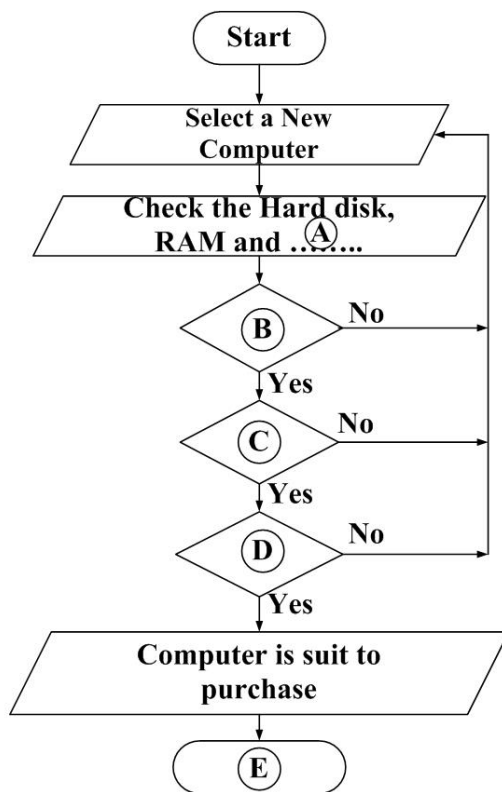




01. Singithi is a grade 9 student, She had a need of a Computer which should have the following features to continue her academic activities;

Hard Disk - 500 Gb
RAM - 2 Gb
Processor - 3.0 GHz

She scrutinizes existing computers one by one until she finds a computer with all of the above specifications to suit her needs from a computer retailer. The relevant Flow chart is given below. select the appropriate word in parentheses to fill in the blanks A, B, C, D, E in the flow chart.



(Hard Disk capacity \geq 500GB ?,

Processor,

End,

RAM Capacity \geq 2GB ?,

Processor Capacity \geq 3.0GHz ?,)

02. Singithi bought a computer that suited her needs and the bill issued by the dealer is as follows. it was set up using a Spread Sheet software..

	A	B	C	D	E
1	Price	Unit Price	Quantity	Total Price	
2	System unit		1	15000.00	
3	Key board		1	800.00	
4	Mouse		1	500.00	
5					
6					
7					
8	Grand Total			16300.00	
9					

- Write the cell address in the cell that shows the total collection of items purchased by Singithi?
- Write down the cell range of the cells that are priced in the above items?

