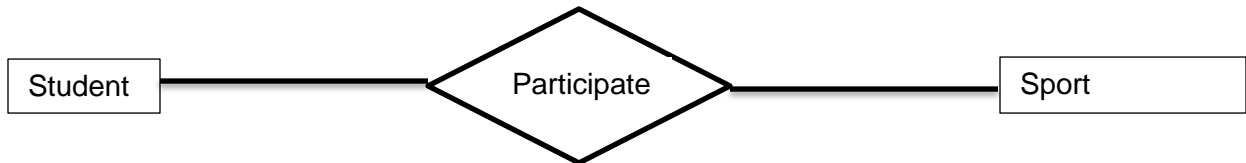




1. The following ER diagram was developed for students to engage in different sports in inter sports house meet.



- (i) Write down the primary keys and attributes for each of these entities separately.

Entity	Primary Key	Attribute 1	Attribute 2

- (ii) Specify the relational schema for the above ER diagram.

2. Convert 28_{10} and -15_{10} into two's complement numbers. Use 8-bits to represent a number.