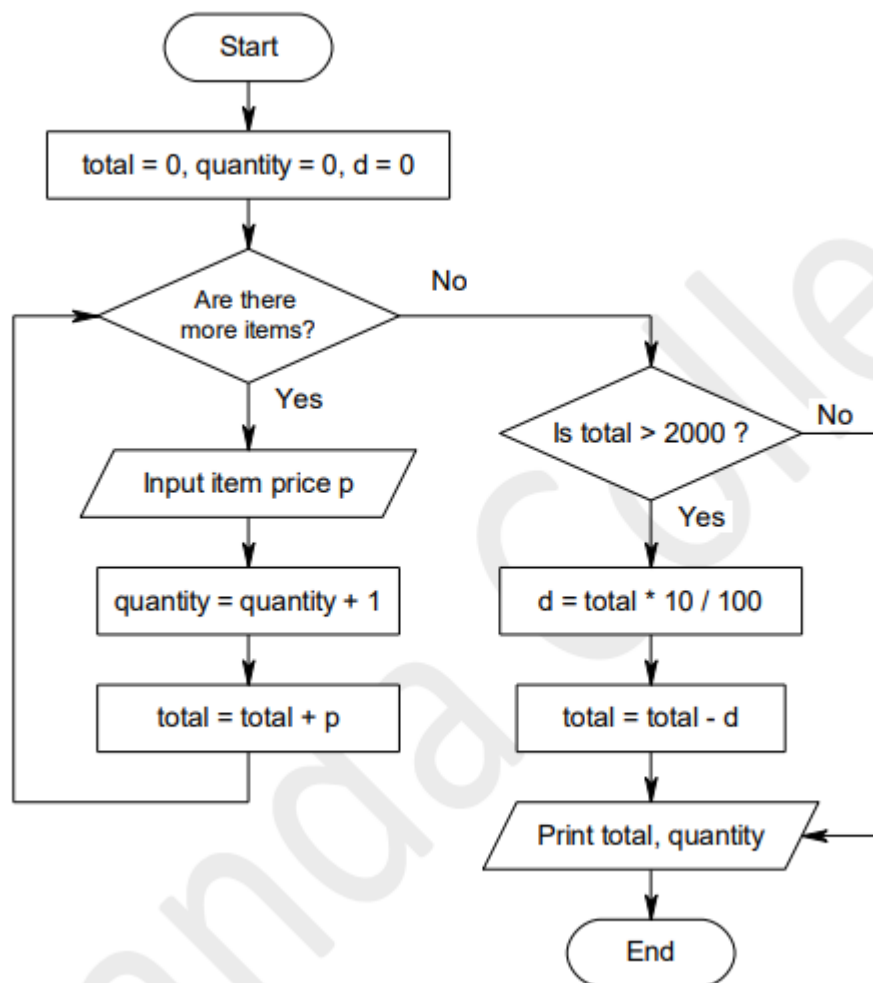




## Unit 8 – Data Base Management

- Following flowchart represents an algorithm for calculating the bill of a customer and printing total value and number of items purchased. If total amount of the bill exceeds Rs.2,000, 10% discount is given.



- (1.) Name the variables used in the above flowchart.
- (2.) Write the control structures used in the above flowchart.
- (3.) Write a pseudo-code corresponding to the logic in the flowchart for the above scenario.